

Epidendrum melinanthum

SCHLTR.

REP. SPEC. NOV. REGNI VEG. BEIH. 7: 139. 1920

Type: Colombia. Valle del Cauca, Papagayeros. Fleurs entièrement jaunes. Alt. 800–1200 m. Nov 1899. *Langlassé* 11 (B†; lectotype: K!; lectotypes: AMES! G! P, US!).

Illustrated specimen: Colombia. Cauca, Municipality of Popayán, road to Timbio, 1600 m. December 2016. *J.S. Moreno & A.L. Erazo* 341 (CAUP; LCDP voucher).

Terrestrial or lithophytic, sympodial, cespitose, erect, terete herb, 30 cm tall including the inflorescence. *Roots* fleshy, 1–2 mm, basal, thick. *Stem* 12 × 0.15–0.18 cm, simple, cane-like. *Leaves* 6 distichous, alternate, dark green, narrowly oblong; sheaths 40–45 × 3.5–3.7 mm, tubular, striated; blade 3–4 × 0.5–1.0 cm, apex obtuse, coriaceous, smooth, green. *Inflorescence* apical up to 18 cm long, racemose, successive, densely many-flowered, peduncle elongate, terete; covered by several tubular, acute, imbricating bracts, 2.2–3 cm long. *Flowers* numerous, successive, 16–19 open at one time, non-resupinate, yellow, callus yellow to orange in mature flowers; no fragrance recorded. *Floral bracts* 3–4 mm erect, lanceolate, acuminate. *Ovary* 1.5 cm long, thin, slender, glabrous, striated. *Sepals* 7–8 × 3–3.5 mm, free, narrowly oblong, slightly acute at the apex, margin entire. *Petals* 8–9 × 0.25–3 mm, free, oblanceolate-spatulate, obtuse, margin irregular towards the apex. *Lip* 6–7 × 7.5–8 mm, united to the column, deeply 3-lobed, margin fimbriate, 8–9 fimbria in the mid-lobe, 8–9 in each lateral lobe; the calli represented of 5 tubercles, 3 basal with a central protuberance rounded, 2 lateral folded; disc with 3 keels; lateral lobes 2.5 × 5 mm, trapezoid; mid-lobe 3 × 3.5 mm, deltate. *Column* 4.5–5 mm long, slightly arched, thin, the apical margin truncate, and irregularly dentate. *Clinandrium* reduced, margin entire. Rostellum apical, slit. *Anther cap* obovoid, apiculate, papillose, 4-celled. *Pollinia* 4, obovoid, laterally compressed, sub-equal. *Capsule* narrowly elliptic, apical neck short.

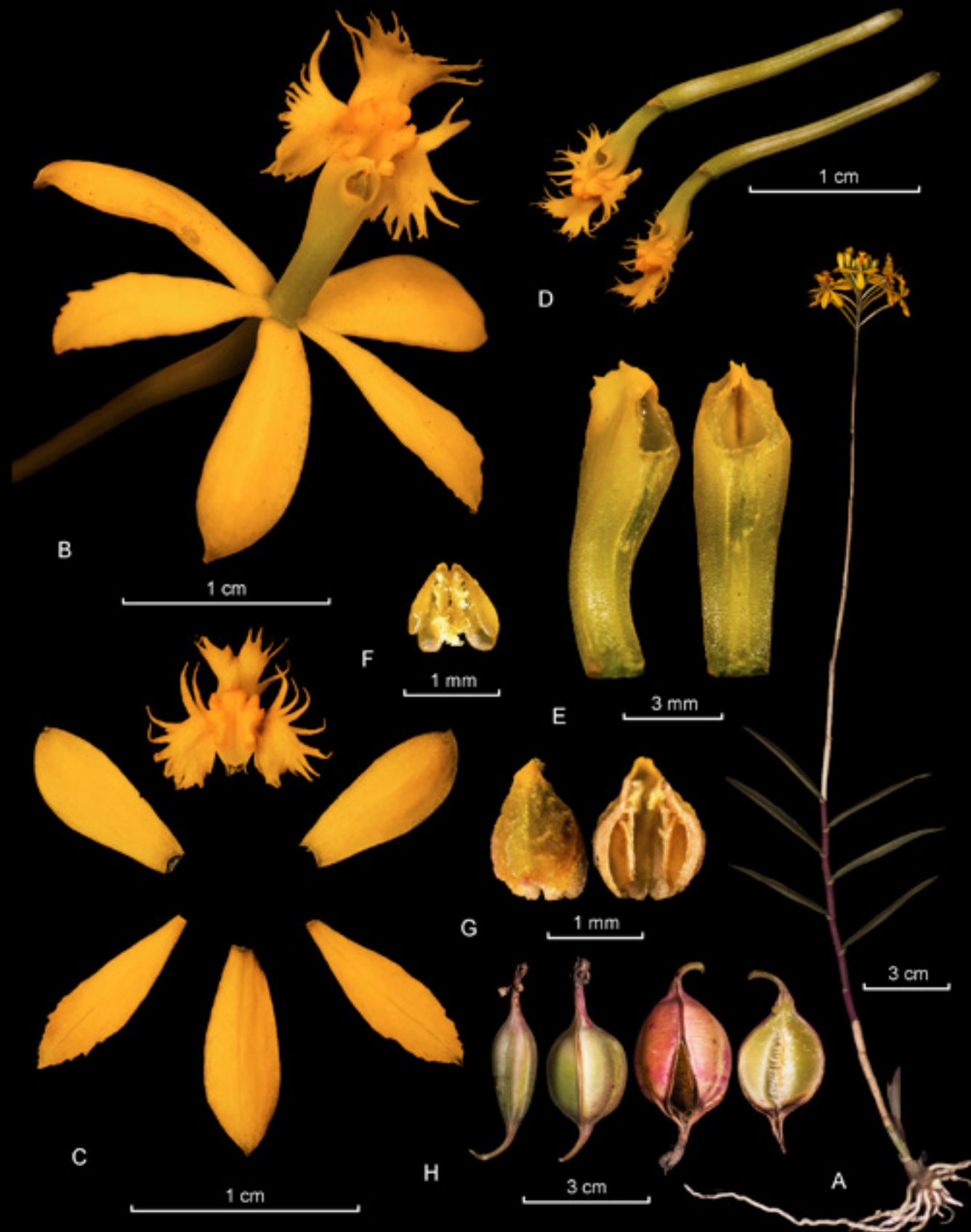
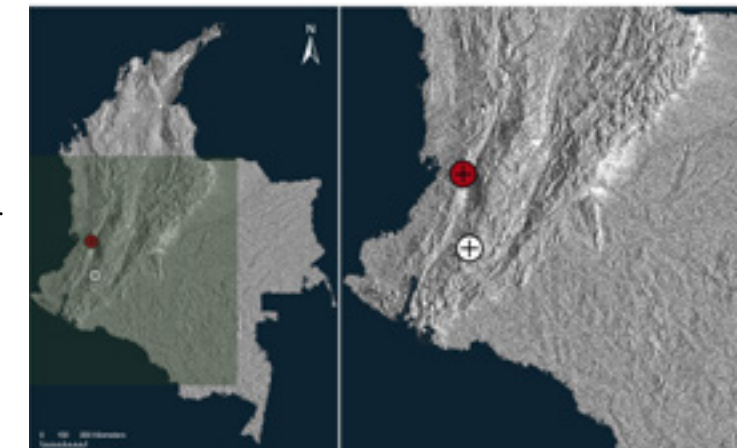
Epidendrum melinanthum is recognized by its terrestrial or lithophytic habit, distichous leaves, an apical inflorescence of numerous and successive non resupinate yellow flowers and by having 3 basal tubercles, a T shaped lip, with a deeply dentate margin, and

the mid-lobe bifid, into two square, somewhat divergent lobes with a mucro in the sinus. Similar to *Epidendrum aura-usecheae* Hágsater, C. Rincón-Useche et O. Pérez with also yellow flowers but the margins of the lip deeply fimbriate with the fimbria bent in all directions and a more complex callus represented by a structure of 12–14 unequal tubercles.

References:

Hágsater, E., Rincón-Useche, C & Perez, O. 2016, *Epidendrum aura-usecheae* in E. Hágsater & L. Sánchez S. (eds.), The Genus *Epidendrum*, Part 10, *Icon. Orchid.* 14: t. 1410.

Kolanowska, M., Hágsater, E., Szlachetko, D.L., Santiago Ayala, E & Saldaña, L. S. (2014). Orchids of the Department of Valle del Cauca (Colombia). Volume 2: Epidendroideae (Epidendreae 1): Subtribes Laeliinae, Epidendrinae, Ponerinae. Koeltz Scientific Books, Königstein. 494 pages, ISBN-13: 978-3-87429-451-5.



LCDP: *Epidendrum melinanthum* Schltr. A. Habit. B. Flower. C. Dissected perianth. D. Ovary with column and lip. E. Column, side and dorsal view. F. Pollinia. G. Anther cap. H. Capsule, different states of maturation.

