

Kefersteinia taggesellii

NEUDECKER

ORQUIDEOLOGÍA 19 (3): 98. 1994

Type: Colombia. Unknown type locality, flowered in cultivation in the collection of G. Krönlein at Eisenheim, Germany, 1 Aug. 1994, G. Krönlein s.n. (holotype M).

Illustrated specimen: Colombia. Santander: Provincia de Vélez, municipio de La Belleza, Vereda Vista Hermosa, 2400 m, mountain rainforest, April 30, 2016, N. Gutiérrez M. 004 (JBB; LCDP voucher).

Epiphytic, caespitose *herb* up to 25 cm tall, with short rhizome and stems close together, resulting in a clump of multiple, fan-shaped growths. *Roots* thick, ca 4 mm in diameter. Stems abbreviated, completely enclosed by 3–4 conduplicate, ancipitous sheaths, the upper ones foliaceous. *Leaves* thin, linear-oblong, acute, the central vein abaxially prominent, folded at the base into a conduplicate petiole to 2 cm long, up to 22.0 x 1.8 cm, articulated with the basal sheath. *Inflorescence* single flowered, lateral, patent to subpendent, exerted from the axil of the foliar sheath, to 7 cm long; the peduncle terete, slender, provided with 2–3 glumaceous, loose, ovate, acute bracts to 4 mm long. *Floral bracts* double, the external one broadly ovate-subcircular, obtuse, ca. 7 x 7 mm, the inner one smaller, narrowly lance-olate, ca. 7 x 2 mm. *Pedicellate ovary* subclavate, the valves deeply grooved, to 1.3 cm long. *Flowers* translucent pale yellowish green, the petals and sepals covered with dark purple spots often arranged in longitudinal rays, the lip white densely spotted with purple, the color spots more dense in the center of the blade, the column cream, finely spotted with rose-purple, particularly abaxially, the anther cap white. *Dorsal sepal* lanceolate, acute, 1.9 x 0.7 cm. *Lateral sepals* lanceolate, slightly asymmetrical-subfalcate, acute, 1.5–1.6 x 0.6 cm. *Petals* lanceolate, acute, inserted along the margins of the column, 2.0 x 0.6 cm. *Lip* broadly trapezoid-subcircular from a cuneate base, 1.9 x 1.6–1.7 cm, the base canaliculate-concave, the blade geniculate at the middle with the apex reflexed and almost vertical; margins denticulate-crisped; callus umbonate, high, like an inverted, truncate pyramid, the apex square, bi-furcate, the basal horns longer. *Column* semiterete, curved at the dilated apex, 1.4 x 0.5–0.6 cm, provided with thin, elliptic substigmatic wings and three longitudinal keels, subsigmoid in profile, the central one higher, below

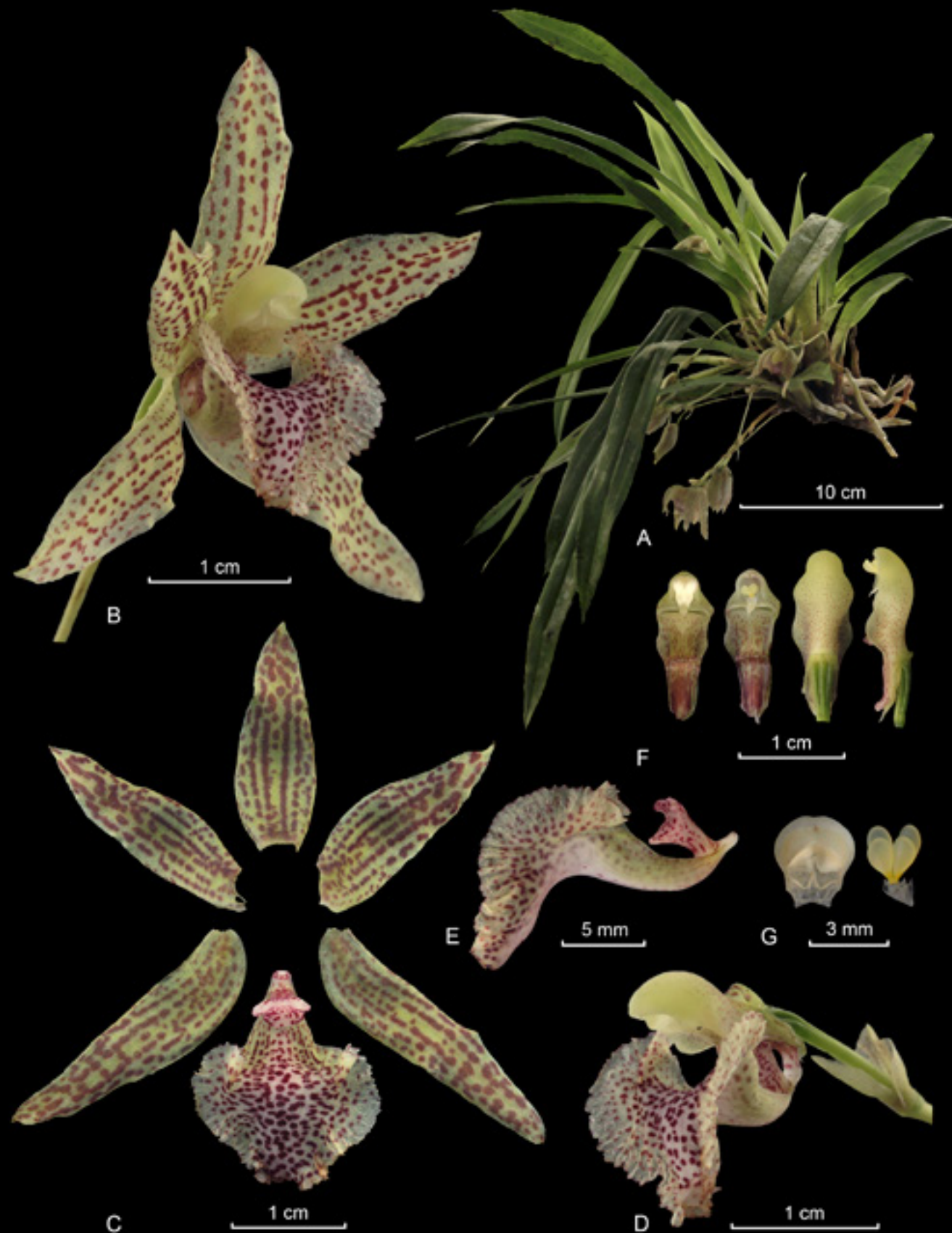
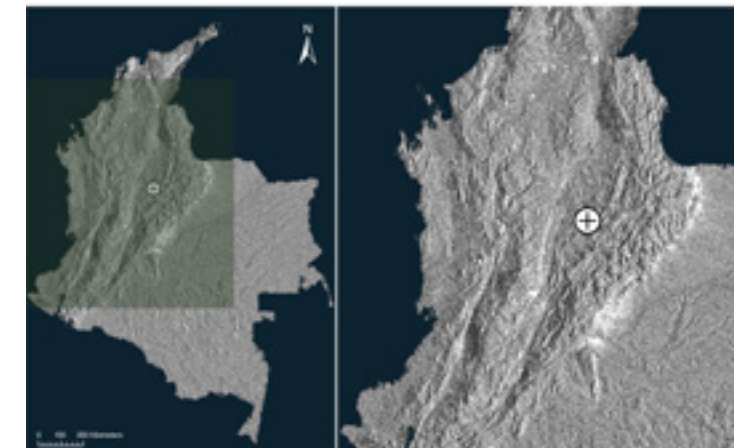
the stigma. *Stigma* ventral, slit-like. *Pollinia* 4 in two pair of different size, dorsiventrally superposed, triangular-ovate, complanate, light yellow, on an oblanceolate, hyaline stipe, curling immediately after re-moval; viscidium hyaline, triangular, scarcely distinct from the stipe. *Anther cap* incumbent sub-ventral, cucullate, ovoid, emarginated, 2-celled. *Capsules* with lateral dehiscence.

Kefersteinia taggesellii is superficially similar to *K. graminea* (Lindl.) Rchb. f. and *K. tolimensis* Schltr. but the latter species belong to a distinct group, characterized by a low, broad, laminar callus. Among the species provided with a umbonate callus, *K. taggesellii* is more closely related to *K. taurina* Rchb. f., from which can be distinguished by the presence of much prominent wings on the column (vs. reduced), and the quadrate, doubly bifurcate callus (vs. bull head-shaped, with two diverging horns at the base).

References:

Neudecker, T. (1994). Dos especies nuevas del genero *Kefersteinia*. *Orquideologia* 19(3), 97–102.

Harding, P. A. (2008). *Huntleyas and related orchids*. Timber Press, Portland, Oregon.



LCDP: *Kefersteinia taggesellii* Neudecker **A.** Habit. **B.** Flower. **C.** Dissected perianth. **D.** Column and lip, three quarters view. **E.** Lip, lateral view. **F.** Column, ventral (with and without anther cap), dorsal, and lateral views. **G.** Anther cap and pollinarium.

