

Masdevallia hortensis

LUER & R. ESCOBAR
ORQUIDEOLÓGIA 16(2): 154. 1984

Type: Colombia. Antioquia: Municipality of Jardín, La Cifuentes, 2600 m. 26 May 1983. *R. Escobar, L. & J. Posada et. al. 2707* (Holotype: SEL).

Illustrated specimen: Colombia. Antioquia: Municipality of Jardín, Vereda Macanas, Reserva Natural el Centello, 2500 m. 3 August 2014. *Norberto Lopez et. al. 8397* (JAUM; LCDP voucher).

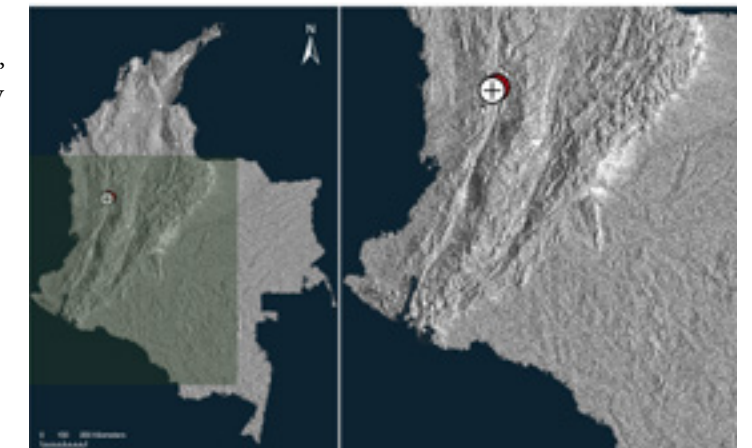
Plant epiphytic, caespitose, up to 11 cm tall. *Roots* flexuous, up to 1 mm in diameter. *Ramicauls* erect, up to 7 mm long, enclosed by 2–3 tubular sheaths. *Leaves* bright green, erect, thinly coriaceous, petiolate, elliptical-obovate, subacute, emarginate with a short apiculus, 4.5–7.5 cm long including the petiole, 8–12 mm wide. *Inflorescence* congested, successively flowered, to 9 cm long. *Peduncle* erect to suberect, green, up to 7.1 cm long, with two tubular bracts, one at the base and the other on the lower third. *Floral bract* tubular. *Pedicle* 5–6 mm long. *Ovary* red purple, 3.3 mm long, winged. *Dorsal sepal* white, suffused with yellow below the middle, striped-spotted with red-purple, oblong, glabrous, lamina 9.4 × 5.6 mm, connate to the lateral sepals for about 1 mm, the rounded apex with a callus, abruptly contracted into a reflexed red-purple tail 22 mm long. *Lateral sepals* white, suffused with yellow near the base, suffused with purple-red along the mid vein and at the base, oblong, revolute, glabrous, lamina 11 × 3 mm, the rounded apex abruptly contracted into a deeply reflexed, yellow suffused with red-purple tail 21 mm long. *Petals* yellow, dotted with purple-red and suffused with red at the base, oblong to obovoid, glabrous, 4.3 × 1.9 mm, ending with the emarginate apex, the labellar margin with a longitudinal carina. *Lip* yellow, minutely dotted with red-purple near the base and borders, hinged beneath to the column foot, elliptical-ovate, glabrous, 4.5 × 3 mm, canaliculate, narrowed below the recurved, expanded, rounded apical portion. *Column* white, sparsely dotted with purple-red, semiterete, 6.4 × 1.4 mm, with an incurved foot 2.4 mm long. *Stigma* ventral. *Pollinia* yellow, two, ovoid. *Anther cap* cucullate, apical.

Masdevallia hortensis is similar to most other species of *Masdevallia* subgenus *Meleagris*, it can be distinguished by the callus at the

apex of the dorsal sepal and the revolute, white, lateral sepals with a red-purple mid vein. For a long time known only from the type locality where it became extinct by over-collecting, it has been recently rediscovered in two other nearby localities in the Cordillera Occidental in Antioquia and Risaralda, Colombia, where it grows as an epiphyte in shaded and very humid areas of the montane forests around 2600 m elevation.

References:

Luer, C. A. & R. Escobar, 1984, Nuevas especies en las Pleurothallidinae de Colombia, *Orquideologia* 16(2): 154-157.



LCDP: *Masdevallia hortensis* Luer & R. Escobar. A. Habit. B. Flower. C. Dissected perianth. D. Ovary with column and lip, side and ventral view. E. Lip and petal. F. Anther cap and pollinia.

