

# *Epidendrum schistochilum*

SCHLTR.

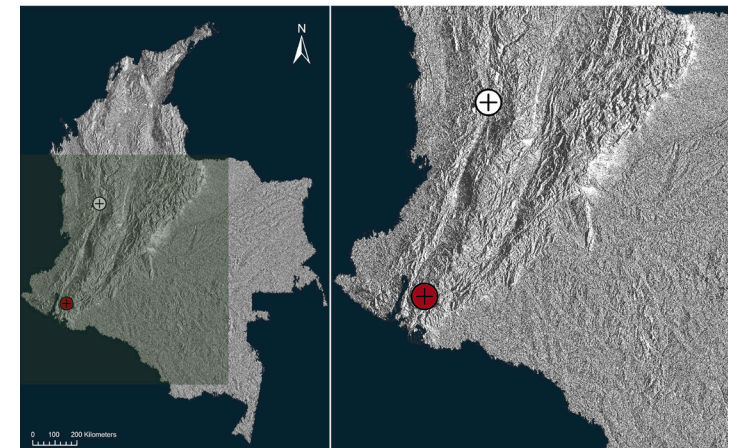
REP. SPEC. NOV. REGNI VEG. BEIH. 27: 73. 1924

**Type:** Colombia. Terrestrisch bei Pasto, 2400 m, *W. Hopp* 20 (holotype: B†).

**Illustrated specimen:** Colombia. Caldas: Manizales. Refugio Silvestre Río Blanco, al norte de la ciudad. En bosque secundario, 5°07'31" N 75°26'48" W, 2060 m, 7 de agosto 2015, *A.P. Karremans 6708*, *J. Alomía*, *L. Henao-Mejía* & *J.T. Otero* (LCDP voucher).

Epiphytic or lithophytic, sympodial, caespitose, erect *herb*, 1.5 m tall including the inflorescence. *Roots* flexuous, fleshy, 4–3 cm long. *Stem* simple, cane-like, up to 90 cm. *Leaves* coriaceous, oblong, obtuse, distichous, alternate, up to 12, distributed along the upper half of the stem, dark green, 8–10 × 1.5–2.0 cm. *Inflorescence* terminal, racemose, successive, densely many-flowered, peduncle elongate, terete, up to 60 cm long. *Flowers* numerous, non-resupinate, successive, 12–16 open at one time, white, callus yellow-orange; no fragrance recorded. *Floral bracts* 3–4 mm erect, lanceolate, acuminate. *Sepals* 7–8 × 3 mm, free, narrowly oblong-obovate, obtuse, shortly apiculate. *Petals* free, oblanceolate-spathulate, obtuse, margin irregular towards the apex, 8–9 × 3 mm. *Lip* fused to the column to about the middle, deeply 3-lobed, conspicuously fimbriate, 1 × 0.75–8 mm, with a thick central callus composed of three main, acute tubercles, the mid protuberance thick, triangular, occupying the midlobe of the lip, the two lateral protuberances shorter, ovoid, aligned with the lateral lobes of the lip. *Column* slightly arched, cylindrical, 5 mm long. *Clinandrium* reduced, margin irregular. *Rostellum* apical, slit. *Anther cap* obovoid, papillose, 4-celled. *Pollinia* 4, obovoid, laterally compressed, sub-equal.

*Epidendrum schistochilum* is recognized by the large, erect plants, distichous leaves, numerous, successive, non-resupinate flowers. The flowers are snow white with a thick, triangular, three-lobed, orange callus in the middle of the three-lobed, fimbriate lip.



**LCDP:** *Epidendrum schistochilum* Schltr. **A.** Habit. **B.** Inflorescence. **C.** Flower. **D.** Dissected perianth. **E.** Ovary with column and lip. **F.** Column, side and ventral view. **G.** Pollinia.

