

Catasetum ochraceum

LINDL.

EDWARDS'S BOT.REG. 30: MISC. 44. 1844

Type: Colombia. Sent to the Horticultural Society from the Hacienda del Hospicio, in the province of Bogota, *Hartweg s.n.* (holotype, K).

Illustrated specimen: Colombia. Valle del Cauca: Rio Frío, Via a Salónica, 800 m. 29 June 2017. *Juan Sebastián Moreno 441* (CAUP; LCDP voucher).

Plant epiphytic or lithophytic, caespitose, 1 m tall including the inflorescence. *Roots* flexuous, fleshy. *Pseudobulbs* thick, cigar-shaped, clustered, fusiform to ovoid, lightly curved, 3–4 subequal internodes, enveloped by papery white sheaths. *Leaves* apical, distichous on the youngest pseudobulb, elliptic, plicate, acute, deciduous, 30–40 cm long. *Inflorescence* basal, arched, racemose, raceme up to 20 cm long. *Flowers* 6, olive-green, thick, fleshy, unisexual. *Ovary* sulcate, 7.5–8.0 mm long. *Sepals* similar, galeate, oblanceolate-ovate, concave, abruptly acute, the lateral sepals covering the petals, 15 × 10 mm. *Petals* 6-veined with brown spots at the base, obovate, subconcave, abruptly acute, 15 × 10–11 mm. *Lip* embracing the column, fused to its base, fleshy, thick, galeate, trilobate, 17 × 30 mm, spreading; lateral lobes orbicular, concave, 11–13 keels along the inner face, 13–14 × 15 mm each lobe; midlobe yellow, ovate, acute, thickened at the apex, 7 × 7–8 mm. *Column* stained with brown spots in the adaxial surface, trigonous, elliptic, erect, fleshy, subtriangular, cucullate, 1.5 × 0.5–0.6 cm; rostellum recurved, subtriangular, ca. 5 mm long; antennae convergent, parallel, curved, slender, bilaterally symmetrical, leaning on the inner face of the lip along the keels, 1.5 cm long. *Anther cap* apical, subtriangular, 2 celled, 4 mm long. *Pollinia* 2, yellow, oblanceolate, cleft, compressed, 4 mm long; stipe involute with a white, sticky rounded viscidium.

Catasetum ochraceum Lindl. is found in Colombia growing at elevations between 300 and 1700 m. It belongs to *Catasetum* sect. *Isoceras* (Mansf.) Senghas subsect. *Convergentia* Bicalho & F.Barros, where it is recognized by having olive-green helmet shaped flowers, bearing a thick, trilobate lip that embraces the column with the concave, orbicular lateral lobes. *Euglossa gairdneri* Dressler

and *Euglossa modestior* Dressler have been recorded pollinating this species of *Catasetum*.

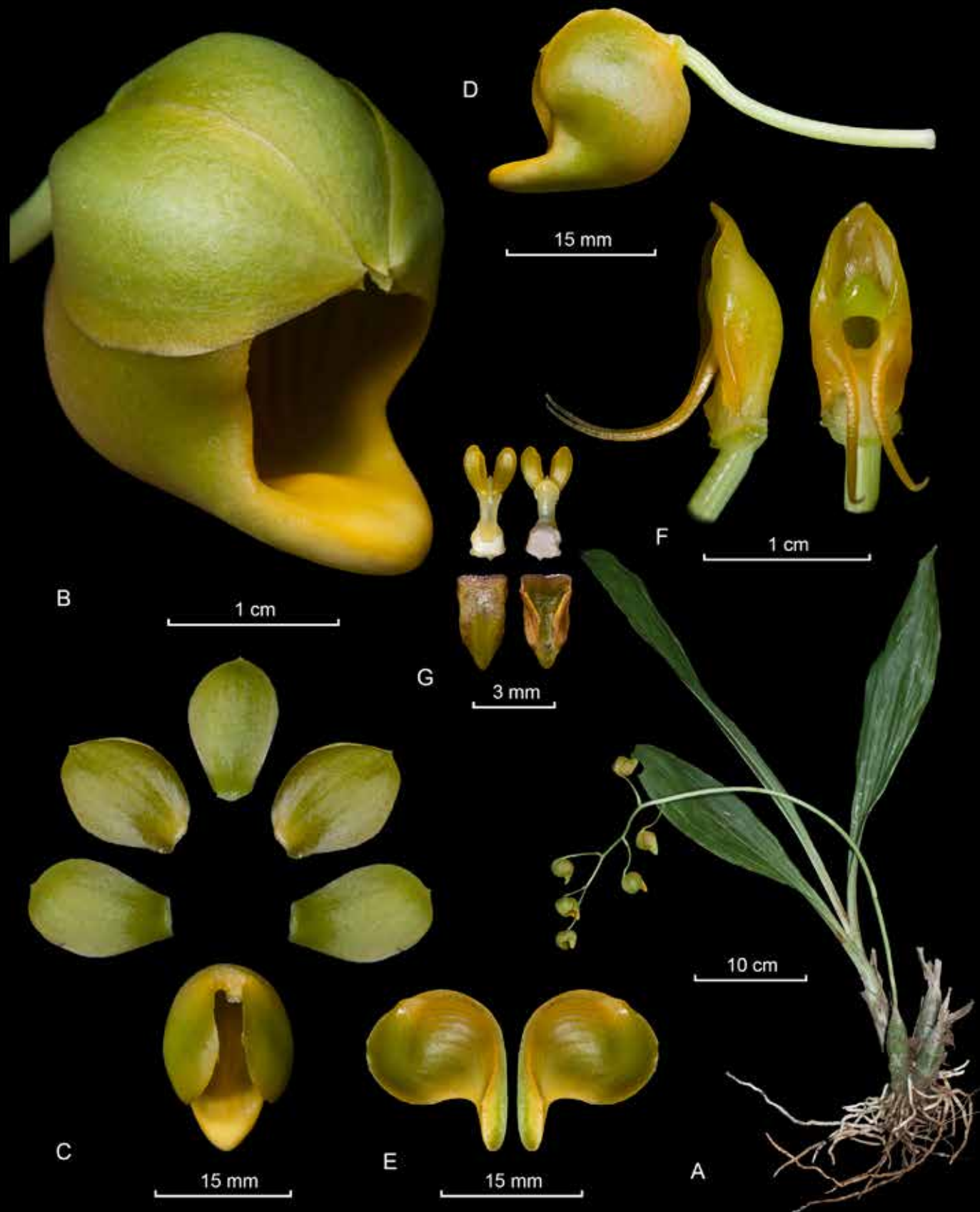
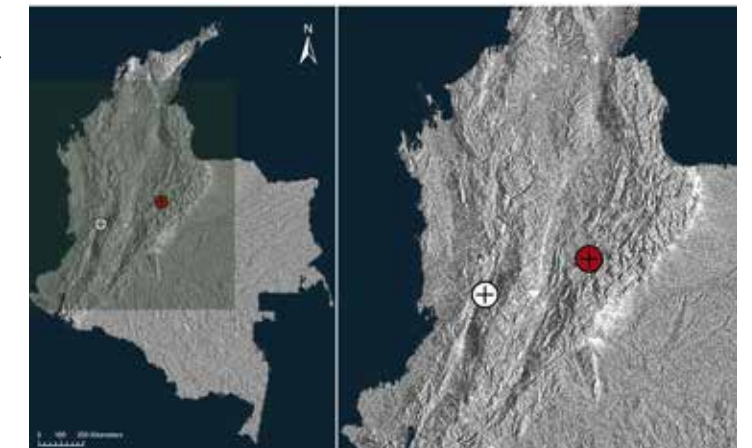
References:

Romero, G. 2009. Subtribe *Catasetinae*. In: A. Pridgeon, P. Cribb, M. Chase & F. Rasmussen (Eds.), *Genera Orchidacearum Vol. 5: Epidendroideae (Part two)* (pp. 11-12). Oxford: Oxford University Press.

Garay, L. 1969. Orquídeas Colombianas nuevas o críticas, decena II. *Orquideología* 4(2): 79.

Holst, A. 1999. *The world of Catasetums*. Portland: Timber Press.

Milet-Pinheiro, P. & Gerlach, G. 2017. Biology of the Neotropical orchid genus *Catasetum*: A historical review on floral scent chemistry and pollinators. *Perspectives in Plant Ecology, Evolution and Systematics* 27: 23-34.



LCDP: *Catasetum ochraceum* Lindl. (♂) A. Habit. B. Flower. C. Dissected perianth. D. Lip, side view. E. Dissected lip. F. Column, ventral and side view. G. Anther cap and pollinarium.

