

Epidendrum bispathulatum

HÁGSATER, O. PÉREZ & E. SANTIAGO

ICON. ORCHID. 13: T. 1307. 2010

Type: Colombia. Valle del Cauca: Municipality of Yotoco, Yotoco Natural Reserve, 1600 m. 11 April 2010. O.A. Pérez-Escobar, E. Parra & V. Hidalgo 513 (holotype: VALLE).

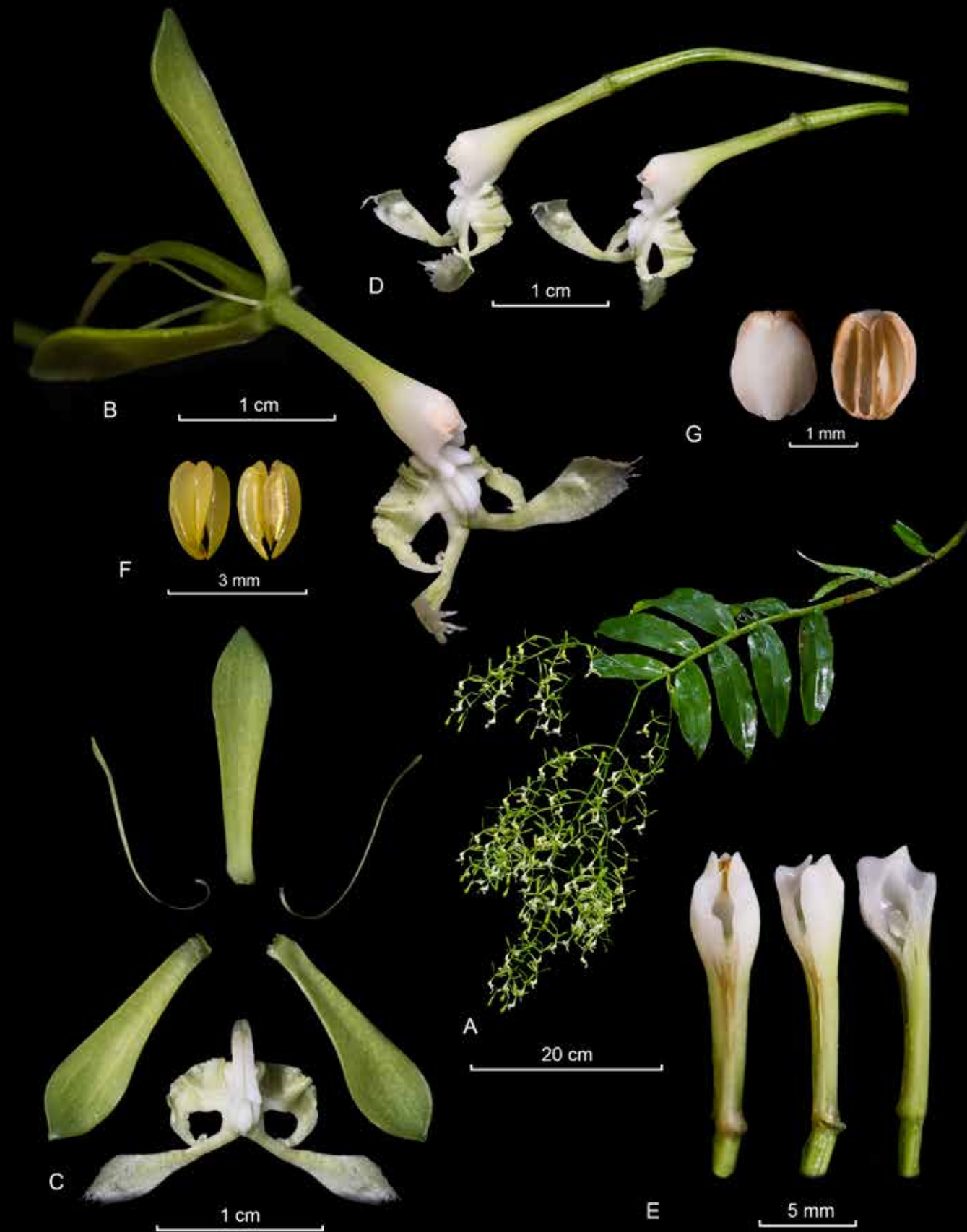
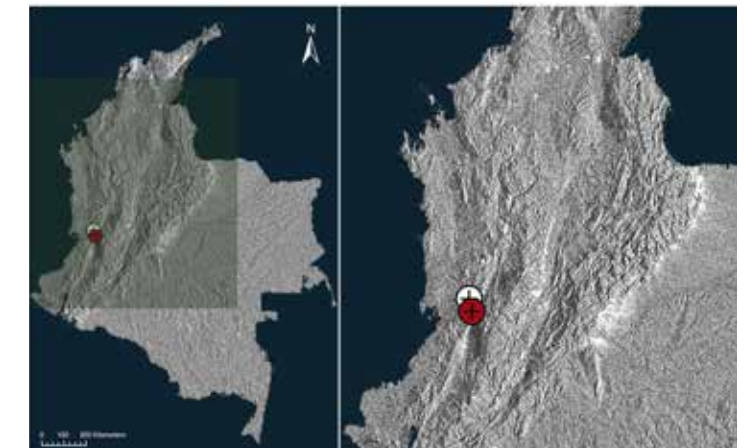
Illustrated specimen: Colombia. Valle del Cauca: Municipality of Calima, El Darién, 1800 m. March 2017. W.G. Vargas 29477 (COL; LCDP voucher).

References:

Hágsater, E., Pérez, O. & Santiago, E. 2010. *Epidendrum bispathulatum*. In E. Hágsater & L. Sánchez S. (Eds.), *The Genus Epidendrum*, Part 9, *Icon. Orchid.* 13: t. 1307.

Epiphytic, sympodial, caespitose, *herb*, 160 cm tall with the inflorescence. *Stems* simple, cane-like, pendent up to 120 cm long. *Leaves* alternate, elliptic, acute, margin entire, 8–12 cm long. *Inflorescence* apical, paniculate, many-flowered, 35 cm long. *Ovary* terete, thin, 16.6–17.3 cm long. *Flowers* green with the apex of the column and the disc of the lip white, fragrant. *Sepals* reflexed, free, spatulate, sub-acute, slightly concave, 15 × 3–4 mm. *Petals* reflexed, free, filiform, apex rounded, 13.0 × 0.5 mm. *Lip* united to the column, 3-lobed, base truncate, 10 × 17 mm; bicallose, short; disc with 3, narrow, acute, parallel keels; lateral lobes obliquely triangular, acuminate, somewhat cirrhose, outer margin crenulate, 3.5 × 3.0 mm; mid-lobe deeply bilobed, the lobes slightly divaricate, each lobe linear-spatulate, obliquely truncate, erose, 8 × 3 mm. *Column* straight, short, entire, 15 mm long. *Pollinia* 4, “bird-wing” type, laterally compressed, 1.7 mm long. *Anther cap* ovoid, 4-celled, 1.7–1.8 mm long.

Epidendrum bispathulatum is recognized by the very long tall stems, the flowers green with the apex of the column and the disc of the lip white, the bilobed mid-lobe of the lip with the lobes linear-spatulate, widened towards the apex and obliquely truncate. It is most similar to *Epidendrum cirrhochilum* F. Lehm. & Kraenzl. with shorter stems, similar flowers, but the lateral lobes and lobes of the mid-lobe are cirrhose and the lip has a circular purple ring surrounding the disc of the lip.



LCDP: *Epidendrum bispathulatum* Hágsater, O. Pérez & E. Santiago. **A.** Habit. **B.** Flower. **C.** Dissected perianth. **D.** Ovary with column and lip. **E.** Column, side view, dorsal view and longitudinal dissection. **F.** Pollinia. **G.** Anther cap.

