

# *Epidendrum hamatum*

(GARAY) DRESSLER

PHYTOLOGIA 21(7): 441. 1971



**Synonyms:** *Stenoglossum hamatum* Garay, Orquideología 4: 72. 1969.

**Type:** Colombia. Cundinamarca: Supatá y San Francisco, 1500–2000 m, *M. Ospina-Hernández* no. 22A (holotype: AMES, 86296!).

**Illustrated specimen:** Colombia. Antioquia: Municipality of Jardín, road to Reserva Natural Cueva del Esplendor, pluvial mountain forest. 2250 m, 10 October 2018, *E. Domínguez, Y. Cardona & L. Echeverry* 1568 (JAUM; LCDP voucher).

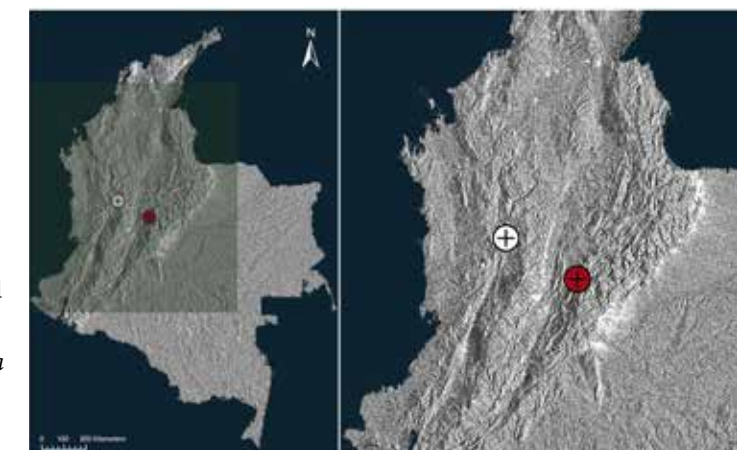
Epiphytic, sympodial, caespitose, erect *herb*, 10–15 cm tall. *Roots* flexuous, pale brown. *Stem* 8 × 0.6–1.0 cm, simple, cane-like. *Leaves* 1–6, (6 on primary stem, 1–2 on successive stems) distichous, alternate, distributed throughout the stem, green; sheaths 10–22 × 0.6–1.0 cm, tubular, membranous, pale green; blade 3.0–9.0 × 0.8–1.5 cm, oblong, apex unequally bilobed, unequal, progressively larger, coriaceous. *Spathe* 4.4 × 0.4 cm, oblong, laterally compressed, sides parallel. *Inflorescence* 19 cm long, apical, erect, racemose; peduncle 12 × 0.15 mm. *Flowers* 10, non-resupinate, pale green, with small brown spots, except for the column which is green with purplish spots at the apex, calli yellow at base, then green spotted brown; anther pale yellow. *Floral bracts* much shorter than the ovary, triangular, acute. *Ovary*, 6 × 0.9 mm, terete. *Sepals* free, fleshy, glabrous, 3-veined, margins entire, spreading; dorsal sepal 6 × 2 mm, reflexed in natural position, narrowly cuneate, apex rounded and minutely apiculate; *lateral sepals* 7 × 2.5 mm, narrowly cuneate, falcate, apex obtuse, with a low dorsal keel ending short apiculate. *Petals* 6.5 × 0.7 mm, free, somewhat reflexed, linear-oblong, slightly widened at the obliquely truncate apex, 1-veined, margins entire. *Lip* 7.2 × 1.5 mm, united to the column, 3-lobed, incurved in natural position; lateral lobes 1 mm long, very small, retrorse, sub-terete, apex hook-like; mid-lobe hamate, linear-filiform, apex rhomboid, concave, acute; bicallose, elongate, parallel, rounded. *Column* 3 × 2 mm, short, thick, arched upwards, apex forming a pair of wide, prominent rounded wings; clinandrium-hood short, entire. *Anther* reniform, 4-celled. *Pollinia* 4, obovoid, somewhat laterally compressed; caudicles soft and granulose; viscidium viscous. *Nectary* wide, short, without pene-

trating the pedicellate ovary, glabrous.

*Epidendrum hamatum* is an endemic species that belongs to the *Mancum* group, *Stenoglossum* sub group, which is characterized by its non-resupinate flowers, lip with a lineal, terete or semi-spathulate central lobe. The most related species is *Epidendrum coryophorum* (Kunth) Rchb.f., but differs from the last by its pale green flowers with purplish spots at the apex and the lip with lateral lobes very small, sub-terete, apex hook-like; mid-lobe hamate, linear-filiform, apex rhomboid, concave, acute; bicallose, elongate, parallel, rounded.

## References:

- Garay, L. A. 1969. El Género *Stenoglossum*. *Orquideología* 4(2): 67–75.
- Dressler, R. L. & G. E. Pollard. 1971. Nomenclatural Notes on the Orchidaceae – IV. *Phytologia* 21(7): 433–443.
- Sánchez, S. L. & Hágsater, E. 2009. *Epidendrum hamatum* in The Genus *Epidendrum*, Part 8, in E. Hágsater & L. Sánchez S. (eds.) *Icon. Orchid.* 12: pl. 1252.v



**LCDP:** *Epidendrum hamatum* (Garay) Dressler. **A.** Habit. **B.** Flower. **C.** Dissected perianth. **D.** Column-lip, lateral view, and longitudinal section. **E.** Column, ventral and lateral view. **F.** Anther cap.

