

*Huntleya gustavi*

(RCHB.F.) ROLFE

ORCHID REV. 24(286): 236. 1916

**Synonyms:** *Batemannia gustavi* Rchb.f., Linnaea 41: 108. 1876.**Type:** Colombia, Neu Granada, 1500–1800 m, *G. Wallis* s.n. (holotype: W).**Illustrated specimen:** Colombia. Risaralda: Municipality of Pueblo Rico, Monte Bello, Tatamá National Natural Park, 1424 m, 8 June 2017. *S. Vieira-Uribe 33, K.D. Fernandez, L.F. Perez* (JAUM; LCDP Voucher).

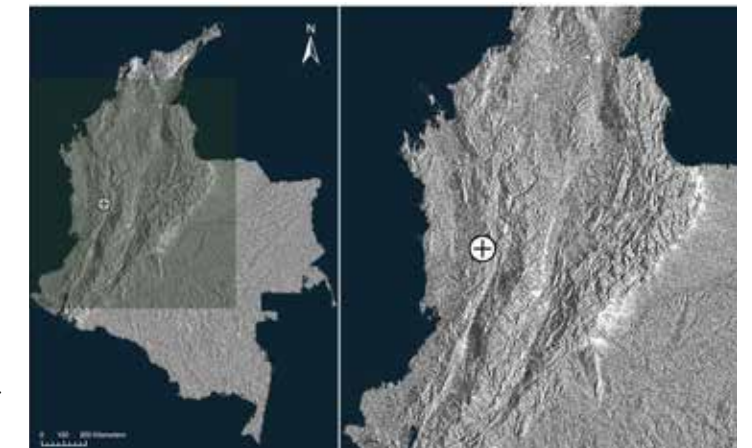
*Plant* of medium size growing as epiphytic tuft, usually found on trunks or large branches of trees, up to 30 cm in length. *Roots* thick, fleshy and flexuous. Plants lacking pseudobulbs but with a thickened stem palpable at the base of the leaves. Petiole and leaves conduplicate, *leaves* plicate at base, lying flat apically, arranged distichously along stem to form an open fan, up to  $28 \times 2.5$  cm. *Inflorescence* produced from axils of central leaves. Peduncle upright with single flower. *Flowers* light yellow, sepals and petals with two transverse red blotches which almost merge in the center to become a band at mid length; sepals are suffused with red at the tips, making the whole apical portion red; petals with a second red suffusion forming a second bar but fading to red distally; lip apically white, crest fimbria red, lip epichile yellow, minutely spotted red arranged along veins; column white, apical margins and wings green-yellow, ventral surface with minute red spots. *Sepals* and *petals* ovate and shortly acuminate, surface smooth and shiny, minimal dimpling on lateral sepals. *Dorsal sepal*  $2.6 \times 1.5$  cm; *lateral sepals*  $2.7 \times 1.7$  cm; *petals*  $2.4 \times 1.6$  cm. *Lip* attached to a long column foot,  $1.5 \times 1.4$  cm, hypochile convex with semicircular crest, apical fimbria short, lateral fimbria longer, 7 mm long; epichile ovate and apiculate, markedly recurved, 8 mm long. *Column* stout, straight, 2.1 cm long, apex arcuate producing a hood over the clinandrium, column foot with apicule, ca. 1 cm long. Column wings are large, earlike, longer than wide, and angle outward. *Anther* ventral, operculate. *Pollina* 4 oval, subequal, waxy.

*Huntleya gustavi* belongs to a group of species with only one set of fimbria on the hypochile. These species have medium size flowers

with sepals approximately 3 cm long and a lip approximately 2 cm long. Similar species with these traits are *Huntleya brevis* Schltr. (distinguished by having sepals longer than wide), *H. caroli* P. Ortiz (sepals and lip with red apexes), *H. citrina* Rolfe (yellow lip), and lastly *H. apiculata* (Rchb. f.) Rolfe (described as white).

**References**

Harding, P. A. 2008. *Huntleya and Related Orchids*. Portland: Timber Press.



**LCDP:** *Huntleya gustavi* (Rchb.f.) Rolfe. **A.** Habit. **B.** Flower. **C.** Dissected perianth. **D.** Ovary, column and lip, side view. **E.** Column, ventral view. **F.** Pollinarium.

