

Lepanthes calimae

P. ORTIZ

ORQUIDEOLOGÍA 21(1): 69. 1998

Type: Colombia. Valle del Cauca: [Darién], Represa del Lago Calima, ca. 1500 m. Junio 28 1996, P. Ortiz, J.H. Ramírez & J.A. González 1090 (holotype, COL).

Illustrated specimen: Colombia. Valle del Cauca: Dagua, San Jose del Salado, Altos de San José del Salado, 1860 m. July 2016, J.S. Moreno & A. Erazo 376 (CAUP; LCDP voucher).

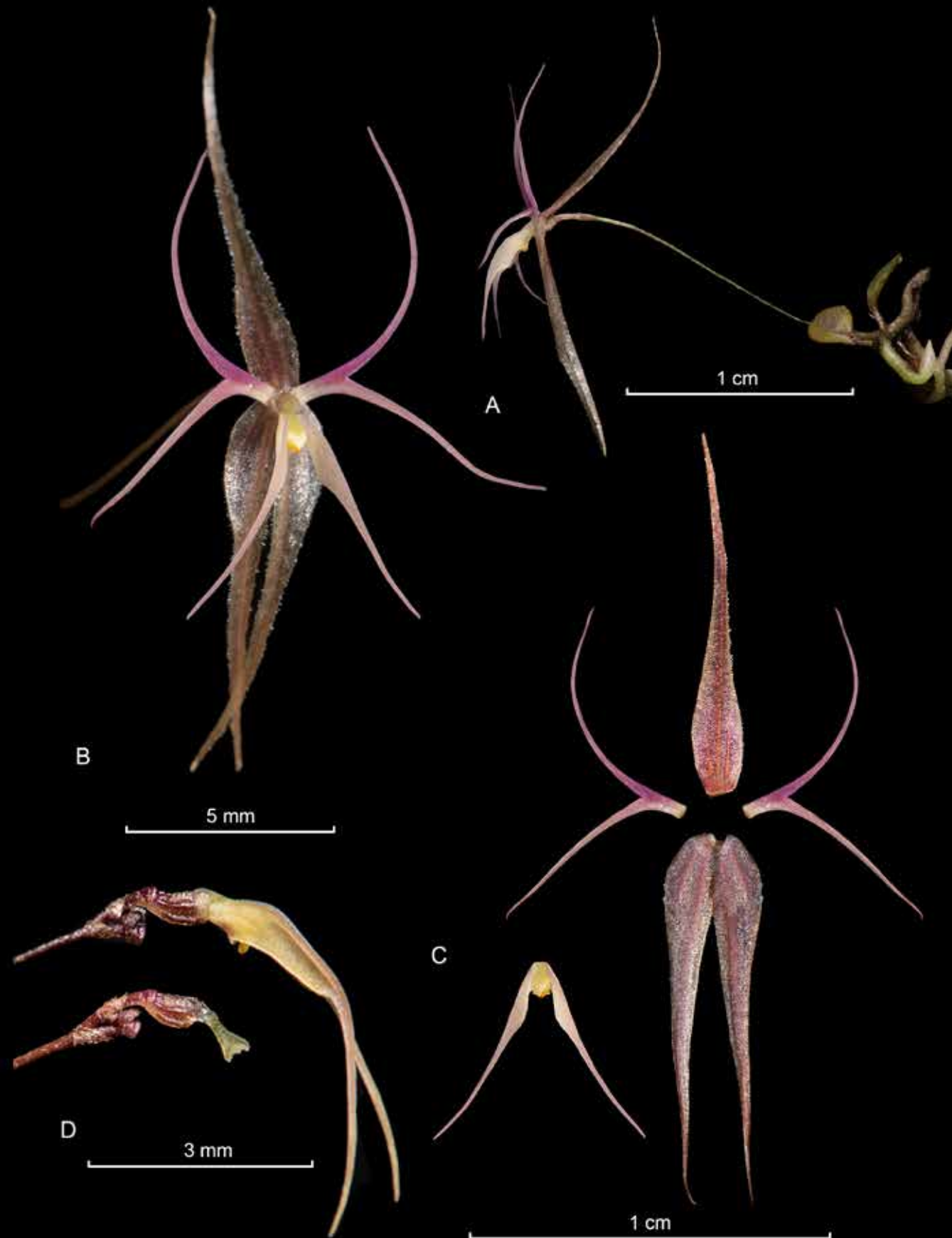
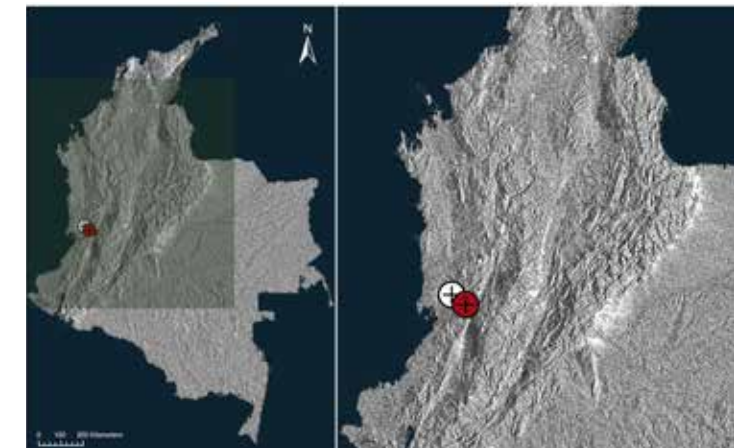
References:

Luer, C.A. & Thorerle, L. 2012. Icones Pleurothallidarum XXXII, *Lepanthes* of Colombia (Orchidaceae). *Monographs in Systematic Botany from the Missouri Botanical Garden* 123: 1–296.

Ortiz, P. 1998. Una interesante especie nueva de *Lepanthes*. *Orquideología* 21(1): 68-71.

Plant epiphytic, caespitose, up to 1 cm tall including the inflorescence; roots, flexuous, thick. *Ramicauls* erect, 2 mm long. *Leaves* erect, coriaceous, obtuse, 3.0×1.5 mm. *Inflorescence* a loose, successively few-flowered raceme up to 1 cm long, surpassing the leaf. *Ovary* obliquely obovoid, 1 mm long. *Dorsal sepal* rose, carinate, narrowly ovate, long acuminate, acute, microscopically ciliate, 3-veined, free from the lateral sepals, 1.0×1.8 – 2.0 mm. *Lateral sepals* rose, carinate, narrowly ovate, long acuminate, acute, microscopically ciliate, connate 1.5 mm, 2-veined, 1×2 mm. *Petals* rose, light yellow at the base, glabrous, 1 mm wide at the base, bifurcated into linear lobes 1 mm above the base, the segments equal, capillary, 7 mm long. *Lip* light yellow with rose, glabrous, bifurcate less than 1 mm above the base, bilobate, the lobes narrowly long-acuminate, 7.5×1.0 mm, 2-veined, slightly revolute in the basal half, the base connate to the base of the column, 5.5×1.0 mm. *Column* red-pink, terete, 1 mm long; the anther and the stigma apical.

Lepanthes calimae P. Ortiz, is an endemic species from Valle del Cauca Department, in the southwest of Colombia. Its distribution is restricted to the Calima region in the municipality of Darién, with additional records from near the Anchicayá Valley, where the specimen illustrated was collected. It is characterized by having pink-yellow flowers larger than the leaves, a filamentous perianth, bifurcate petals and a lip bifurcate above the base into narrowly ovate, attenuate lobes.



LCDP: *Lepanthes calimae* P. Ortiz. A. Habit. B. Flower. C. Dissected perianth. D. Ovary, column and lip.

