

Andinia auriculipetala

S. VIEIRA-URIBE & N. GUTIÉRREZ, SP. NOV.

Type: Colombia. Santander: Vélez province, Municipality of La Belleza, Vereda Vista Hermosa, 2480 m. 11 January 2020. *M. Calderón Hernández 190* (holotype: JBB; LCDP voucher).

Andinia auriculipetala is most similar to *A. cordilabia* and *A. wernerii* but can be distinguished by the acute lateral sepals (vs. apiculate), the reniform, hirsute petals proportionally larger (comparable in size to the lip) with the lobes unequal and the sub-cordate lip ciliate toward the round apex, with the basal lobes oblong and touching above the column.

Plant epiphytic, pendent, long repent, up to 38 cm long. **Stem** occasionally branching, 5.0–6.0 mm long between ramicauls, each segment enclosed by two infundibular, imbricating, membranaceous sheaths, ciliate along the ribs, with ciliate dilated ostia. **Roots** slender, ca. 0.6 mm in diameter. **Ramicauls** ca. 1 mm long, enclosed by a single, infundibular, membranaceous sheath, ciliate along the ribs with ciliate dilated ostia. **Leaves** green, suffused with purple along the veins, broadly elliptic, thickly coriaceous, rounded, emarginate with a short abaxial central mucro, 5.8–9.0 × 4.1–7.0 mm, the base narrowing into a petiole less than 0.2 mm long. **Inflorescence** a congested, successive raceme of 3–4 flowers, occasionally up to 7 flowers, placed almost opposite to the leaf by a slender peduncle ca. 1 mm long; **ovary** glabrous, costate, less than 1 mm long. **Sepals** amber, suffused with burgundy along the veins and at the base. **Dorsal sepal** ovate, convex, hirsute, obtuse, 3-veined, 1.8 × 1.9 mm, connate to the lateral sepals for about 0.7 mm. **Lateral sepals** triangular, diverging, oblique, recurved above the middle, acute, 2-veined, 2.5 × 2.1 mm, connate for about 1.1 mm. **Petals** burgundy with amber external margins, reniform, transversally bilobed with unequal lobes, hirsute, 0.6 × 1.2 mm, the upper lobe widely ovate to triangular, obtuse, 0.5 mm long, the lower lobe ovate to triangular, slightly falcate, obtuse, 0.9 mm long. **Lip** amber with the lateral lobes burgundy, sub-cordate when expanded, cuneate at the base, ciliate toward the broadly rounded apex, the basal lobes oblong, touching above the column, 3-veined, adnate to the base of the column, 1.0 × 1.3 mm when expanded. **Column** rose, apically suffused with amber, terete, the anther and stigma apical, ca. 1.6 mm long including the antrorse,

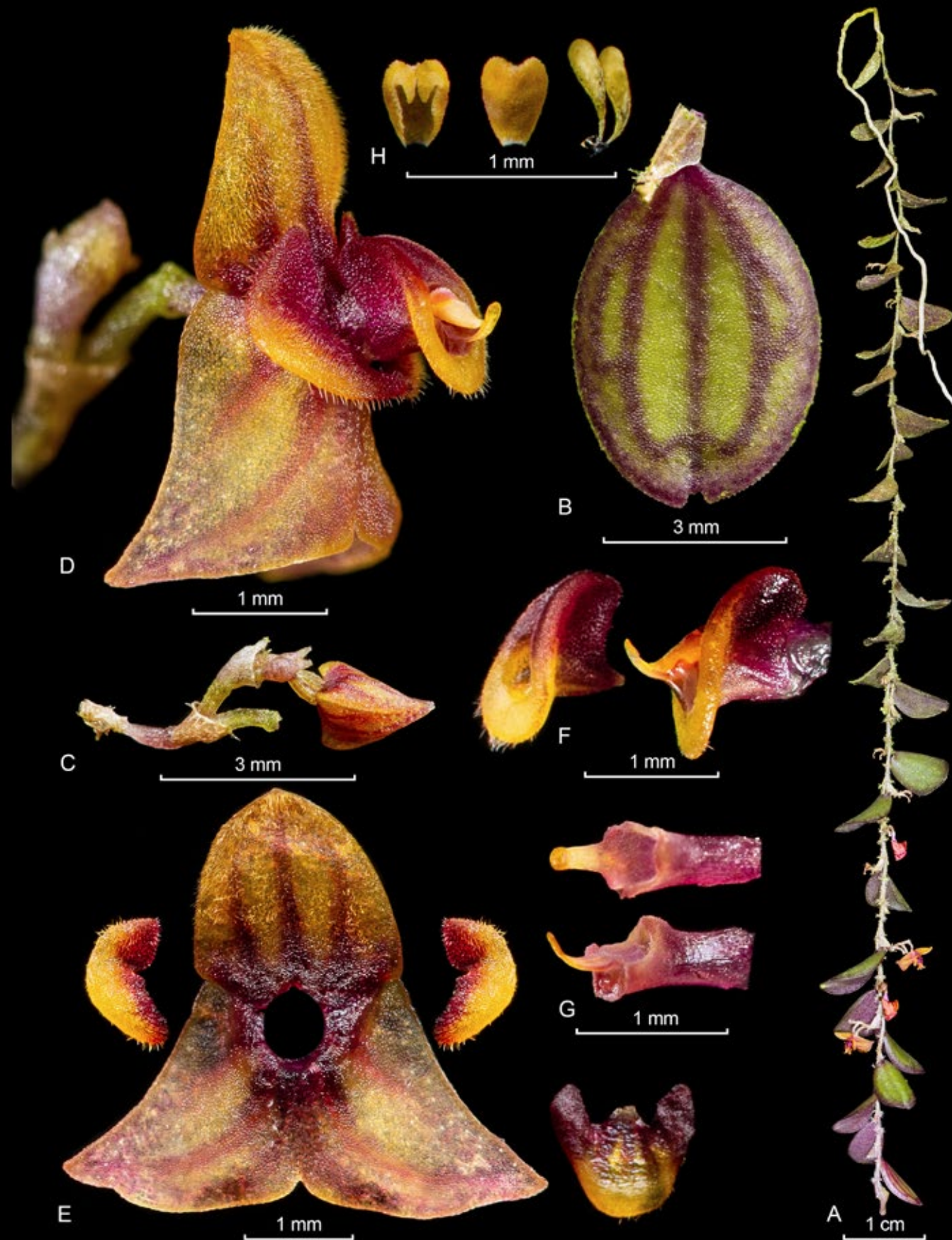
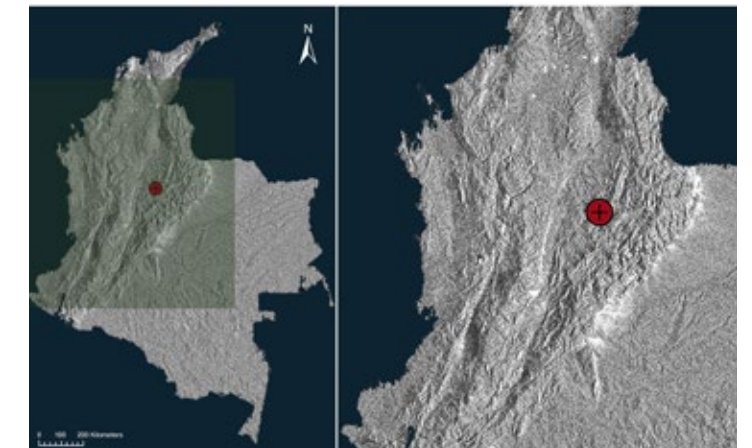
conspicuous rostellum. **Pollinia** two, yellow, obovoid, brought together by a drop-like viscidium. **Anther cap** maize, cucullate

Etymology: From the Latin *auriculatus*, “with an ear-like appendage” and *petalum*, “petal”, referring to the shape of the petals.

Andinia auriculipetala has only been found at the type locality, where it grows together with several other species of subgenus *Brachycladium* (Luer) Karremans & S. Vieira-Uribe such as *A. catella* (Luer & R. Escobar) Karremans & S. Vieira-Uribe, *A. ciliaris* (Luer & Hirtz) Karremans & S. Vieira-Uribe and *A. irrasa* (Luer & R. Escobar) Karremans & S. Vieira-Uribe. It resembles the Ecuadorean *A. cordilabia* (Luer) S. Vieira-Uribe & Karremans and *A. wernerii* (Luer) S. Vieira-Uribe & Karremans in having an elliptical-ovate, hirsute dorsal sepal; diverging ovate to triangular lateral sepals and an inflorescence positioned almost opposite to the leaves, but can be distinguished by the proportionally larger reniform, hirsute petals with the lobes unequal and by the sub-cordate lip ciliate toward the round apex, with the basal lobes oblong and touching above the column.

References:

Luer, C. A. 2002. Icones Pleurothallidarum XXIV. A first century of new species of *Stelis* of Ecuador, part one. *Monogr. Syst. Bot. Missouri Bot. Gard.* 88: 87-96.



LCDP: *Andinia auriculata* S.Vieira-Uribe & N. Gutiérrez. A. Habit. B. Leaf. C. Inflorescence. D. Flower. E. Dissected perianth. F. Lip and lip with column (anther cap present), side view. G. Column, dorsal and side view (anther cap removed). H. Anther cap and pollinia.

