

Masdevallia caudata

LINDL.

GEN. SP. ORCHID. PL. 193. 1833

Type: Colombia. Cundinamarca: "Hab. in subfrigidis regni Novogranatensis, prope S. Fortunato, florens Junio; *Gudot. (hab. s. sp.)*" (holotype, K-L; tracing of type, W)

Illustrated specimen: Colombia. Cundinamarca: Municipality of Granada, Sabaneta, 2700 m. January 2017. K. Gil-Amaya 206, D. Haelterman, D. Mejía & J. Mejía (LCDP voucher).

Plant epiphytic, caespitose; up to 10 cm tall, *roots* coarse.

Ramicauls erect, 1–3 cm long. *Leaves* erect, coriaceous, elliptical, subacute to obtuse, 5–10 × 1–2 cm, cuneate below into a petiole.

Inflorescence a solitary, showy flower, 8–12 cm tall; peduncle erect, 6–8 cm long, with a bract above the base, pedicel 10–12 mm long.

Ovary pale white, with black dots, 8 mm long. *Sepals* contracted into erect, slender, yellow tails 6.5–7 cm long. *Dorsal sepal* yellow, purple veined, dotted with purple-brown, obovate, concave, with denticulate margins, 27–30 × 17–20 mm, connate to the lateral sepals for 8–10 mm to form a shallow, gaping, sepaline cup, the apex rounded. *Lateral sepals* white, dotted with purple, ovate, oblique, 18–20 × 16–19 mm, connate 5–8 mm to form a deep, conical mentum below the column-foot, the apices subacute. *Petals* white, suboblong, 5–5.5 × 2.5–2.7 mm, the apex truncate, tridentate. *Lip* white, dotted with purple, elliptical-oblong, reflexed above the middle, 5.5 × 2.8 mm, the apex broadly rounded, the disc with a close pair of low, longitudinal calli and a single, central callus distant from the apical margin, the base subcordate, hinged foot equally long including the slender, incurved extension. *Column* white, with purple dots in the margins, semiterete, 5.5 mm long. *Anther cap* reddish, cucullate, 1.5 × 1 mm. *Pollinia* two, yellow, ovoid, 1 mm long.

Etymology: From the Latin *caudata*, "with tails", in reference to the long-caudate sepals.

Masdevallia caudata Lindl. is one of the most striking and commercialized species of the genus. This species is seriously threatened and it has been classified by Calderón *et al.* (2006) as an endangered species (EN) following IUCN criteria. *Masdevallia*

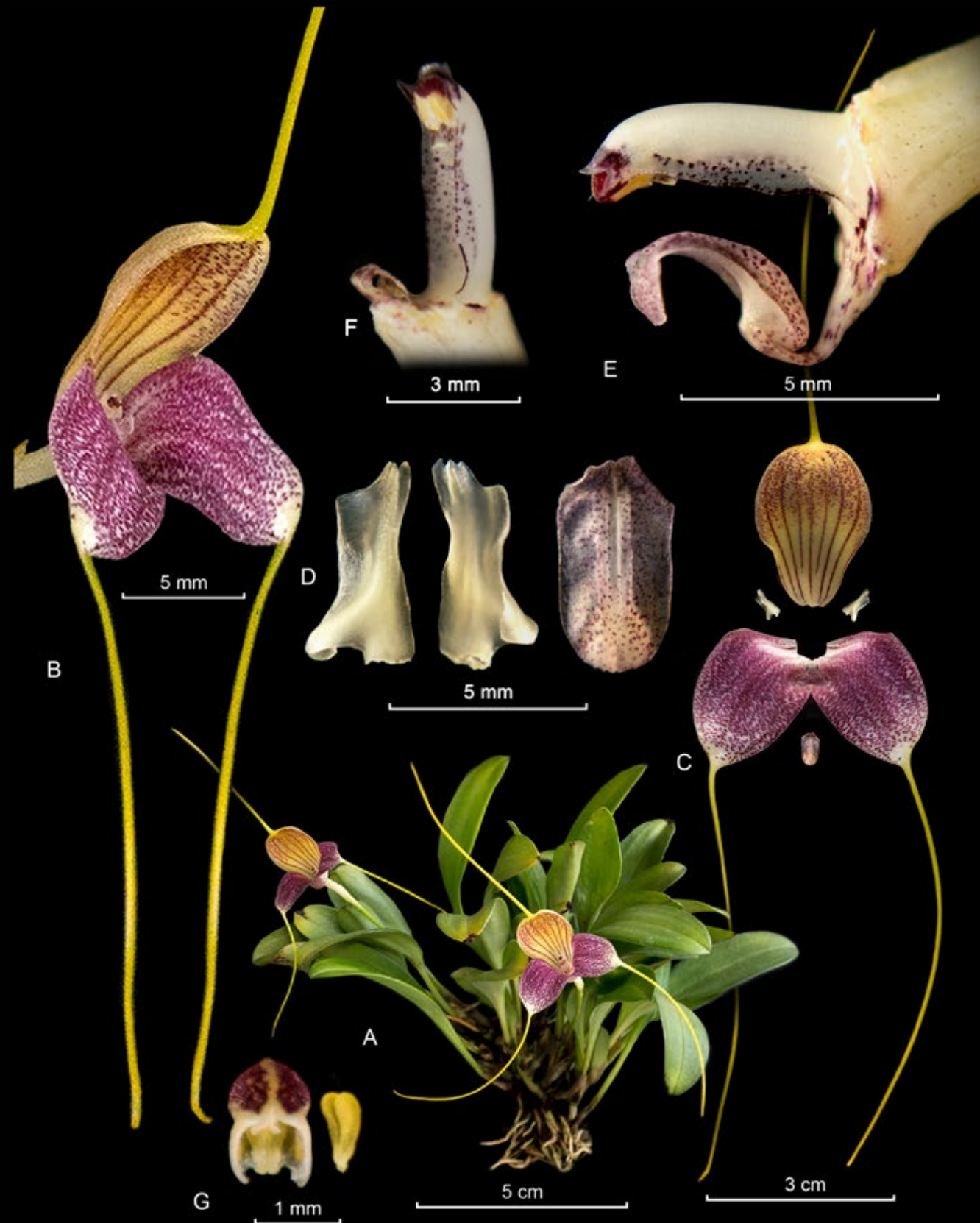
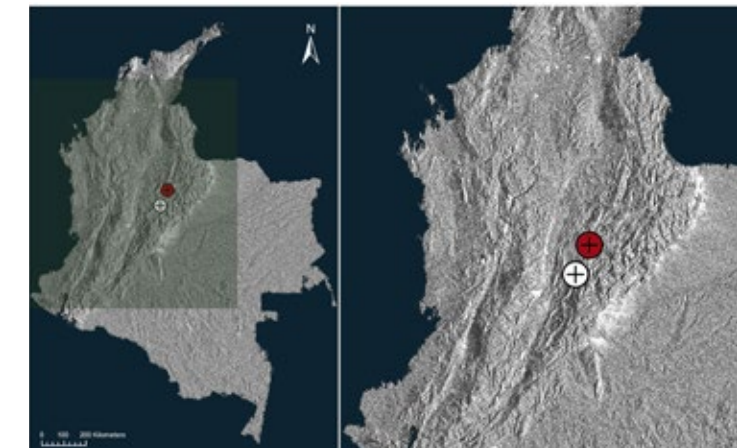
caudata is recognized by the rounded, yellowish dorsal sepal, concave and striped with seven to nine purple-brown lines, the lateral sepals dotted with purple and the long, and slender, yellow tails. The petals are tridentate with a callus well-developed as a thin wing above the middle and a large, thick, retrorse process above the base. The column, petals, and lip stand erect and exposed in the center of the flower.

References:

Calderón E., Farfán J. & Constantino, E. 2006. *Masdevallia caudata* Lindl. pp. 149-151. En: Calderón-Sáenz E. (ed.). 2006. Libro Rojo de Plantas de Colombia. Volumen 3: Orquídeas, Primera Parte. Serie Libros Rojos de Especies Amenazadas de Colombia. Bogotá, Colombia. Instituto Alexander von Humboldt-Ministerio de Ambiente, Vivienda y Desarrollo Territorial.

Luer, C. A. 2000. Icones pleurothallidarum. XXI. Systematics of *Masdevallia*, Part Two. *Monogr. Syst. Bot. Missouri Bot. Gard.* 82: 265-518.

Luer, C. A. (2002). Icones Pleurothallidarum XXIII: Systematics of *Masdevallia*, Part Four. *Monogr. Syst. Bot. Missouri Bot. Gard.* 87: 807-810.



LCDP: *Masdevallia caudata* Lindl. A. Habit. B. Flower. C. Dissected perianth. D. Petals, abaxial and adaxial view; Lip, adaxial view. E. Column and lip, side view. F. Column, ventral view. G. Anther cap and pollinarium.

