

Ornithocephalus escobarianus

(GARAY) TOSCANO & DRESSLER
LINDLEYANA 15(4): 255. 2000

Synonyms: *Sphyrastylis escobariana* Garay, Bot. Mus. Leaf. 21: 263. 1967.

Type: Colombia. Antioquia: Heliconia, 1800 m. alt. Coll. *Gilberto Escobar R. no 104* (holotype, AMES).

Illustrated specimen: Colombia. Tolima: Municipality of Roncesvalles, 2500 m. January 2018. *M. Rincón Gonzalez 421, B. Villanueva & D. Campos.* (TOLI; LCDP voucher).

References:

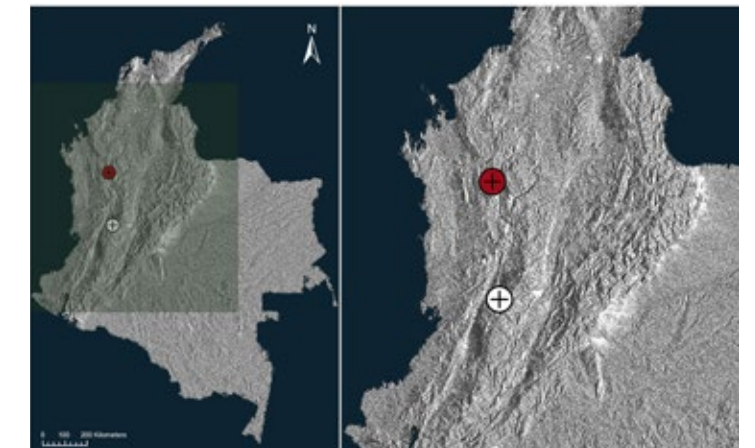
Garay, L.A. 1967. Studies in American orchids VI. *Bot. Mus. Leaf.* 21(9): 241-264.

Toscano de Brito, A.L.V. & R.L. Dressler. 2000. New combination in *Ornithocephalus* (*Ornithocephalinae*: Orchidaceae) and description of a new species from Mesoamerica. *Lindleyana* 15(4): 252-256.

Epiphytic *herb*, pendent, 10 cm long, *stem* sub-cylindric, abbreviated, up to 2 cm long. *Leaves* fan-shaped, conduplicate leaf-sheaths, imbricating below, linear-elliptic, coriaceous, truncate base, amplexicaul, acuminate, 2.5–5 × 0.5 cm. *Inflorescence* 15–18 flowers, racemose, suberect, produced from the axils of the upper leaves, up to 3 cm long; peduncle pubescent, 5 cm long. *Floral bracts* lanceolate, acute, longer than the ovary, 3–4 mm long. *Ovary*, slightly curved, pubescent, 5 mm long. *Sepals* yellow, pubescent and carinate towards the adaxial face, obtuse apex, margin microscopically dentate; *dorsal sepal* oblong-obovate, truncate base, obtuse apex, 5 × 2 mm; *lateral sepals* oblong, oblique, cuneate base, 3.8–4 × 2 mm. *Petals* yellow, 1-nerved, obovate, cuneate base, rounded apex, 5 × 3 mm. *Lip* greenish-yellow, the apical lobe yellow, with a rounded, excavate base and thick, triangular apical lobe, 5 × 2.5 mm. *Column* yellow, sub-erect, short, lobulate, apical lobes rounded, 2.5 × 1.5 mm. *Anther* yellow, apical, ovate, 2 mm long. *Pollinia* 4, yellow, stipe elongate, 1 mm long.

Eponymy: Named in honor of Gilberto Escobar R. from Medellín, Colombia, collector of the species.

Ornithocephalus escobarianus (Garay) Toscano & Dressler is endemic to the Central Andes of Colombia. It is similar to *Ornithocephalus hoppii* (Schltr.) Toscano & Dressler but differs in the rounded lip with an excavate base and a thick, triangular, apical lobe lip.



LCDP: *Ornithocephalus escobarianus* (Garay) Toscano & Dressler. A. Habit. B. Inflorescence. C. Dissected perianth. D. Column and lip. E. Column, side and ventral views. F. Anther cap, dorsal and ventral views. G. Pollinarium.

