

*Bifrenaria longicornis*

LINDL.

EDWARDS'S BOT. REG. 24: PL. 93. 1838

**Synonyms:** *Stenocoryne longicornis* (Lindl.) Lindl., Edwards's Bot. Reg. 29(Misc.): 53. 1843.  
*Adipec longicornis* (Lindl.) M. Wolff, Orchidee (Hamburg) 41: 36. 1990.

**Lectotype:** Without locality (Tabula 93 in Lindley 1838, designated by Koehler & do Amaral 2004).

**Illustrated specimen:** Colombia. Vaupés: Municipality of Mitú, Urania. 175 m. 11 November 2019. *J.S. Moreno 526* (LCDP voucher).

**References:**

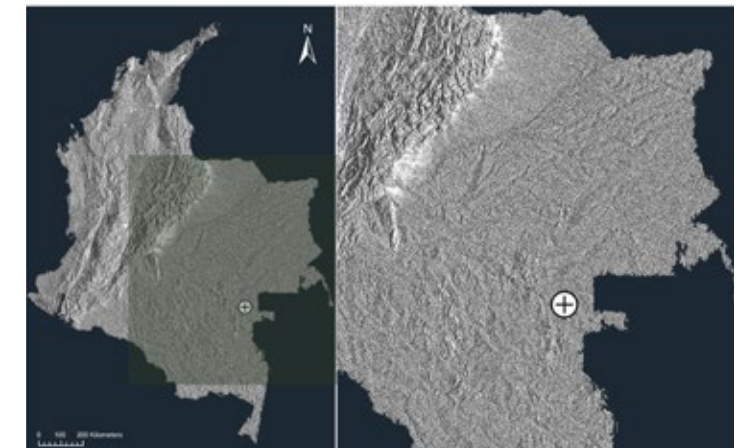
Koehler, S., & do Amaral, M. D. C. E. 2004. A taxonomic study of the South American genus *Bifrenaria* Lindl. (Orchidaceae). *Brittonia* 56(4): 314–345.

Lindley, J. 1838. Miscellaneous notices. *Edwards's Botanical Register* 24: 93–94.

Epiphyte herb, sympodial, scandent, 30–40 cm tall, *roots* thin, up to 20 cm long. *Pseudobulbs* distant, heteroblastic, oblong-elliptic, sub-tetragonal, 8–10 × 3–4 cm. *Leaves* pseudopetiolate, apical, erect, plicate, elliptic, coriaceous, acute, 20–28 × 5–7 cm, *sheaths* triangular, lateral, basal. *Inflorescence* racemose, lax, basal, erect, 25 cm long. *Floral bracts*, triangular. *Ovary* slightly striate, 1.5 cm long. *Sepals* and petals primrose with maroon spots, membranaceous, smooth. *Dorsal sepal* ovate, acute, 10 × 6 mm. *Lateral sepals*, ovate, connate, acute, 15 × 7 mm. Petals elliptic, acute, 8 × 4 mm. *Lip* white with terracotta stripes, membranaceous, pubescent towards the callus, unguiculate to spatulate, sinuate, base cuneate, apex trilobate; callus laminar, elongate from the base to the middle area. *Column* white, slightly curved, 15 mm long including the foot. *Anther* ovate, papillose, white maroon spots. *Pollinia* 4, pale yellow, rounded, with a bifurcate viscidium.

**Etymology:** From the Latin *longicornis* meaning “long horn”, referring to the long spatulate base of the lip.

*Bifrenaria longicornis* Lindl. is restricted to the Amazon ecosystem where it is a widely distributed epiphyte that grows at elevations below 600 m. The species can be recognized by long, scandent rhizomes, a feature shared only with *Bifrenaria venezuelana* C.Schweinf. From the latter it can be distinguished by the several-flowered inflorescence that is longer than the pseudobulbs (vs. 1–2 flowers, shorter than the pseudobulbs), the prominent spur (vs. inconspicuous), the white-yellow flowers with brown-red spots (vs. flowers purple to pale brown).



**LCDP:** *Bifrenaria longicornis* Lindl. **A.** Habit. **B.** Flower. **C.** Dissected perianth. **D.** Column and lip, side view. **E.** Column, ventral and side view. **F.** Anther cap and pollinia.

