

Epidendrum pazii

HÁGSATER

ICONES ORCHIDACEARUM 4: T. 469. 2001

Type: Colombia. Chocó: San José del Palmar, Las Amarillas, Carretera Boqueron-Río Blanco, 2300 m. 2 April 1996. *N. Paz, F. Castro, A. Fajardo & P. Grant 493* (holotype: CUVIC; isotypes AMO; COL; CUVIC).

Illustrated specimen: Colombia. Valle del Cauca: Road from Albán to Anserma Nuevo, 1500 m. 5 November 2015, *E. Domínguez 0298, Calderón-Sáenz, C. Skotak & E. Beach* (JAUM; LCDP voucher).

Epiphytic herb, 1.5–2.3 m tall. *Roots* 5 mm in diameter. *Leaves* elliptical, alternate, distichous along the stem, persistent, rigid; sheaths tubular, laterally compressed, rugose, 2.8–3.3 × 2.0 cm. *Inflorescence* apical raceme, arching, 7 cm long. *Peduncle* short, laterally compressed, 1 mm long. *Floral bracts* short, triangular, attenuate, concave, 4–6 mm long. *Flowers* successive, opening simultaneously from the base, resupinate, yellowish green. *Ovary* terete, 3 cm long. *Sepals* elliptic, succulent, lustrous, rounded at the apex. *Dorsal sepal* 5-veined, 2.3 × 1.0 cm. *Lateral sepals* 7-veined, 2.3 × 1.2 cm. *Petals* elliptic, oblong, lustrous, rounded at the apex, 7-veined, reticulated, 2.1 × 1.2 cm. *Lip* united to the column, sub-orbicular, reniform, succulent, lustrous, with forked and reticulated nerves, prominent over the adaxial area; low central carina with a thick conical apiculum 1.7 × 2.4 cm; 2 laminar, parallel, elongated calli, opposed to the low central carina. *Column* straight, short, thick, white with a green base, 6 × 4 mm. *Clinandrium* short, margin entire. *Anther cap* reniform, 4-celled, white, 3 mm wide. *Pollinia* 4, ovate, laterally compressed, yellow, 2.5 mm. *Nectary* shallow, not forming a sac below the ovary.

Eponymy: In honor of Néstor Paz from the Universidad del Valle, Cali, who collected the type specimen.

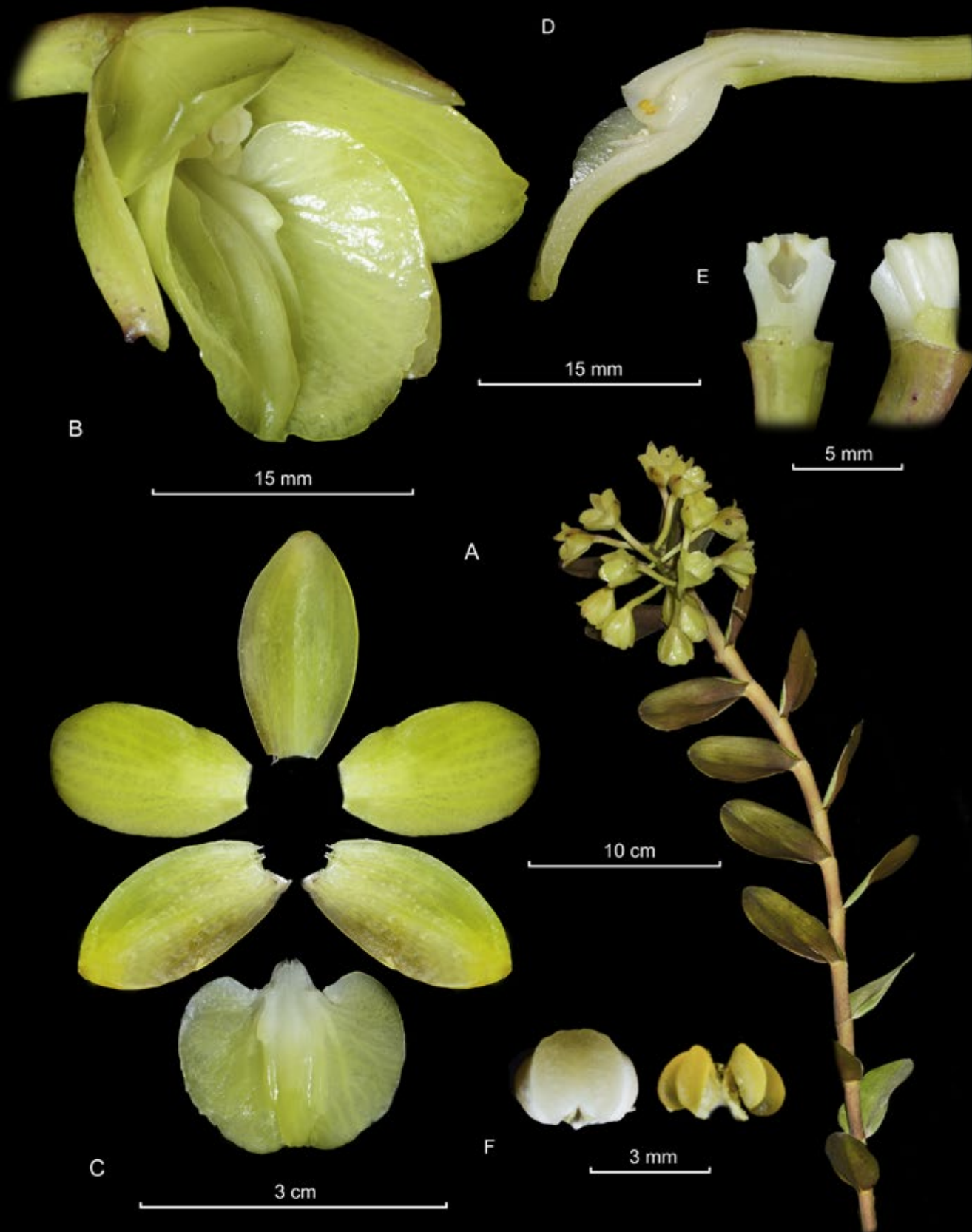
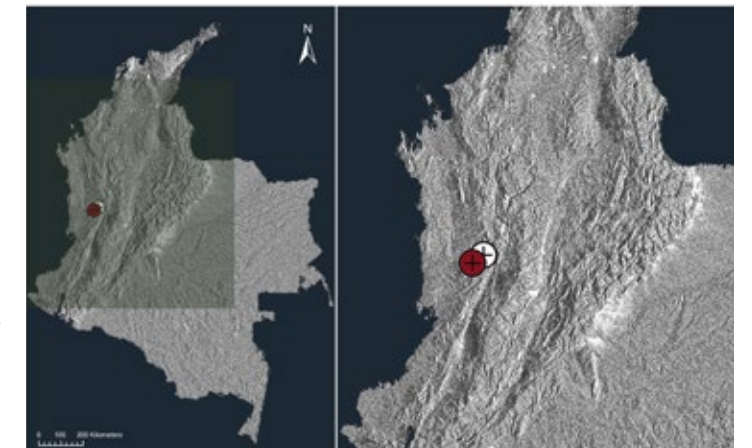
Epidendrum pazii is endemic to the southwestern Andes in Colombia in the departments of Valle del Cauca and Chocó. It differs from similar species in the sturdy plants with large, stiff leaves, and a larger number of successive flowers. *Epidendrum anderssonii* Hágsater & Dodson has narrower and shorter leaves, inflorescences with a higher degree of branching, less flowers per inflorescence and the lacks the low longitudinal carina of the lip is absent.

Epidendrum colombianum A.D.Hawkes, which is very similar to *E. anderssonii*, lacks the two laminar calli flanking the central carina of the lip of *E. pazii*.

References

Hágsater, E. 1993. *Epidendrum anderssonii* in E. Hágsater & G. A. Salazar. (eds.), The Genus *Epidendrum*, Part 1, *Icon. Orchid.* 2: pl. 107.

Hágsater, E. 2001. *Epidendrum pazii* in E. Hágsater & L. Sánchez S. (eds.), The Genus *Epidendrum*, Part 3, *Icon. Orchid.* 4: pl. 469.



LCDP: *Epidendrum pazii* Hágsater. **A.** Habit. **B.** Flower. **C.** Dissected perianth. **D.** Transversal section of column and ovary. **E.** Ventral and side view of the column. **F.** Anther cap and pollinarium.

